

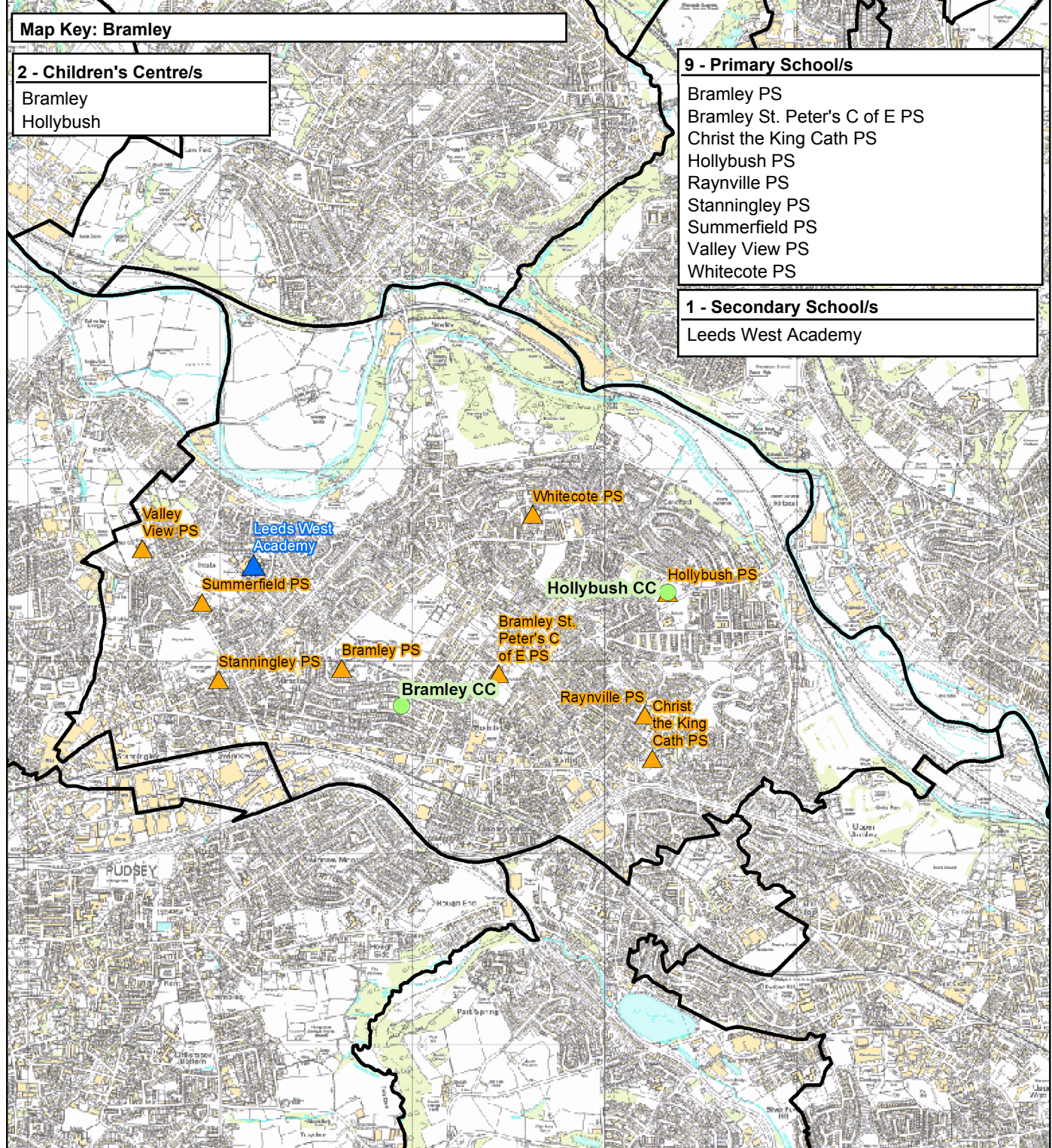
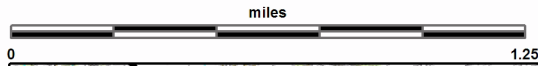
Bramley

This report was produced by the Children's Performance Service on 01/06/2012. The information in these overviews are based on the cluster data profile version 5.12.

For more information telephone 0113 39 50701 or email educ.pmi@leeds.gov.uk or visit:

www.leedsinitiative.org/ClusterDataProfile.aspx

The map to the right gives the position of the cluster in Leeds. The map below shows the location of the Children's Centres, Primary and Secondary Schools in the cluster.



Map Key: Bramley

2 - Children's Centre/s

Bramley
Hollybush

9 - Primary School/s

Bramley PS
Bramley St. Peter's C of E PS
Christ the King Cath PS
Hollybush PS
Raynville PS
Stanningley PS
Summerfield PS
Valley View PS
Whitecote PS

1 - Secondary School/s

Leeds West Academy

Cluster Overviews key**Data Period:**

The codes in the key to the right are for the time periods that the data in these reports cover. They will appear next to all data sets.

Academic Year
Calendar Year
Financial Year
Snapshot
Other

DP:A
DP:C
DP:F
DP:S
DP:O

Cluster Overview

Data Source: January School Census					DP: S	Data Source: January School Census					DP: S
Primary Schools		DFE	Total Number on roll			Secondary Schools		DFE	Total Number on roll		
			2010	2011	2012				2010	2011	2012
Bramley Primary School		2485	226	222	243	* Intake High School		4054			
Bramley St. Peter's C of E Primary School		3054	233	246	258	Leeds West Academy		6906	896	927	1007
Christ the King Catholic PS		3369	183	181	190	* = closed school		Total	896	927	1007
Hollybush Primary School		3922	293	306	330						
Raynville Primary School		2489	454	467	464						
Stanningley Primary School		2490	257	250	251						
Summerfield Primary School		2491	248	242	248						
Valley View Community Primary School		3928	133	143	192						
Whitecote Primary School		2494	445	430	447						
Total			2472	2487	2623						

Data Source: Children's Services - Feb 2012		DP: S
Children's Centre reach area registration for families of children aged 0-5		% Registered
Cluster		37.45
Wedge		53.88
Leeds all		60.23

Data Source: Children's Services	
Children's Centre	Ofsted ID
Bramley	EY267790
Hollybush	EY321541

Data Source: The office of National Statistics population mid-year estimates										DP: S
Population Estimates	0-15			Working Age			60/65+			
	2008	2009	2010	2008	2009	2010	2008	2009	2010	
Cluster	6394	6352	6438	22652	22979	23205	5006	5059	5100	
Wedge	44108	44366	44774	207876	208717	211509	47163	47875	48413	
Leeds all	132741	133396	134493	516578	522769	531036	129937	131536	133240	

Data Source: NHS Leeds												DP: S
Under Fives	September 2010						September 2011					
	Number of infants by age group:						Number of infants by age group:					
	0-1	1-2	2-3	3-4	4-5	Total	0-1	1-2	2-3	3-4	4-5	Total
Cluster	518	518	429	424	427	2316	560	511	499	430	435	2435
Wedge	3318	3278	3014	3023	2870	15503	3376	3315	3236	3035	3102	16064
Leeds all	10202	9848	9478	9195	9113	47836	9996	10173	9787	9438	9319	48713

Data Source: January School Census													DP: S
Percentage of pupils who are:	Black and Minority Ethnic			English as an Additional Language			Free School Meal Eligible			Special Education Needs			
	2010	2011	2012	2010	2011	2012	2010	2011	2012	2010	2011	2012	
Primary													
Cluster school	7.0	8.6	11.0	3.9	4.6	5.9	32.4	33.3	35.0	24.1	22.2	19.5	
Cluster residence	8.9	10.6	12.9	5.4	6.6	7.6	30.1	31.6	33.2	22.6	21.2	18.5	
Wedge school	19.3	20.7	22.2	13.3	14.0	14.3	18.7	19.7	19.4	15.1	15.3	15.6	
Total primary	23.6	24.8	26.4	15.8	16.5	17.1	21.5	22.2	22.0	17.8	17.8	17.4	
Secondary													
Cluster school	7.6	7.1	8.0	1.6	2.0	2.9	35.4	40.0	39.1	50.2	30.1	24.9	
Cluster residence	6.7	7.4	8.0	4.4	4.5	5.6	24.2	27.5	26.5	34.7	28.6	24.6	
Wedge school	15.7	16.1	16.7	9.6	9.8	10.2	16.0	16.3	16.5	19.2	17.8	14.6	
Total secondary	18.6	19.4	20.4	10.4	10.0	11.1	19.0	19.4	19.5	21.4	20.4	19.0	
Leeds all	21.4	22.5	23.9	13.4	13.7	14.6	20.6	21.1	21.1	20.0	19.6	18.7	

Data Source: HM Revenue and Customs - taken on 31st August 2007-2009										DP: S
Child Poverty	Number of children (under 16) in families in receipt of CTC or IS/JSA			Number of children (all ages) in families in receipt of CTC or IS/JSA			Number of children in poverty, by age of youngest child, 2009			
	2007	2008	2009	2007	2008	2009	0-4	5-10	11-15	16-19
Cluster	1845	1820	1895	2015	2000	2105	1140	575	315	75
Wedge	8010	7990	8415	8935	8950	9465	4915	2700	1460	390
Leeds all	30235	29700	31030	33690	33300	34965	18720	9640	5115	1490

Data Source: Children's Services - Summer Term 2011					DP: S
Nursery Education Grant Claims	Number of eligible children	Number of: Claims by childcare setting		Resident Claims	Non Resident Claims
Cluster	660	564		463	101
Leeds all	14500	13851		9704	4148

Data Source: January School Census and 2010 Index of Multiple Deprivation										DP: S
IMD	% of pupils resident in most deprived areas	3% most deprived			10% most deprived			20% most deprived		
		10	11	12	10	11	12	10	11	12
Primary										
Cluster school		0.0	0.3	0.2	35.3	28.2	27.4	55.5	56.5	55.0
Cluster residence		0.0	0.0	0.0	34.2	26.4	27.3	55.9	56.3	56.6
Wedge school		1.5	2.8	2.5	15.6	15.0	15.1	26.8	27.6	27.8
Total primary		8.2	8.4	8.3	28.1	27.1	27.3	36.6	37.6	38.0
Secondary										
Cluster school		4.2	3.8	4.1	39.9	31.1	32.0	54.9	54.2	54.5
Cluster residence		0.0	0.0	0.0	27.6	22.9	24.1	50.3	50.6	51.7
Wedge school		2.6	3.1	2.9	15.0	14.2	14.0	24.6	25.0	24.7
Total secondary		7.0	7.5	7.6	24.0	23.5	23.8	32.3	33.5	33.6
Leeds all		7.7	8.0	8.0	26.4	25.7	25.9	34.8	35.9	36.2

Data Source: January School Census and CACI ACORN											DP: S
KEY: Wealther Achievers(WA), Urban Prosperity (UP), Comfortably Off (CO), Moderate Means (MM), Hard Pressed (HP)											
Percentage of pupils in each ACORN category	2011					2012					
	WA	UP	CO	MM	HP	WA	UP	CO	MM	HP	
Primary											
Cluster school	2.1	0.8	18.6	19.7	58.7	1.9	0.9	20.4	18.5	57.4	
Cluster residence	1.4	1.0	19.5	21.6	56.3	1.3	1.1	20.0	20.5	56.5	
Wedge school	14.6	8.0	31.3	13.0	32.3	14.2	8.2	31.5	13.0	32.2	
Total primary	15.4	5.9	27.8	15.8	34.3	15.0	6.0	27.7	15.9	34.6	
Secondary											
Cluster school	1.5	0.8	16.5	16.1	64.7	1.5	1.2	16.7	17.0	62.5	
Cluster residence	2.1	0.5	23.5	20.7	53.2	1.8	0.6	23.0	21.9	52.4	
Wedge school	18.4	7.0	32.6	12.6	28.8	18.4	7.1	32.8	12.7	28.4	
Total secondary	17.1	5.2	29.7	14.7	32.5	16.9	5.3	29.8	14.7	32.6	
Leeds all	16.1	5.6	28.5	15.4	33.6	15.8	5.7	28.5	15.4	33.8	

Data Source: DWP information Directorate												DP: F
KEY: Job Seekers Allowance (JSA), Incapacity Benefit (IB), Lone Parent Benefit (LPB), Total Out of Work (TOW)												
Unemployment Percentage of working age people in receipt of:	2009				2010				2011			
	JSA	IB	LPB	TOW	JSA	IB	LPB	TOW	JSA	IB	LPB	TOW
Cluster	5.4	7.7	2.5	16.2	5.1	7.9	2.4	16.0	5.1	7.8	2.2	15.8
Wedge	3.5	4.7	1.2	9.8	3.4	4.7	1.2	9.7	3.4	4.7	1.0	9.5
Leeds all	4.4	5.9	1.8	12.6	4.3	5.8	1.7	12.3	4.2	5.8	1.5	12.1

Data Source: AXCIOM Lifestyle Survey 2009-2011												DP: S						
Property type by %									Length of residence by %									
Owned			Rented - Council			Rented - Private			Less than 1 year			2-5 years			More than 5 years			
09	10	11	09	10	11	09	10	11	09	10	11	09	10	11	09	10	11	
Cluster	55.4	55.4	59.8	32.8	32.3	35.9	11.8	12.3	0.0	5.9	8.3	5.5	23.0	23.0	21.1	71.1	68.7	73.4
Wedge	62.9	62.8	34.8	21.7	21.6	71.9	15.4	15.6	0.0	9.4	10.7	6.1	20.6	20.6	18.3	70.0	68.7	75.5
Leeds all	61.5	61.6	39.0	24.0	23.9	61.2	14.5	14.6	0.0	7.9	8.1	5.1	20.3	20.0	18.5	71.9	71.9	76.4
Income by %	<10k			10-20k			20-30k			30-40k			40-50k			50k+		
Cluster	24	21	22	22	23	22	19	19	15	16	13	21	13	9	11	7	15	10
Wedge	20	17	18	21	20	22	16	16	15	15	17	18	14	11	13	15	19	14
Leeds all	20	18	18	21	20	23	16	15	16	15	18	17	14	13	13	14	16	14
Struggling with payments by %	Food						Bills			Mortgage								
Cluster				19.8	12.7	11.0	19.3	13.6	9.1	1.9	3.8	1.1						
Wedge				15.4	11.1	6.2	15.2	12.6	7.5	1.7	2.0	1.6						
Leeds all				15.9	10.8	6.4	16.3	13.0	8.3	2.2	2.2	1.7						

Being Healthy

Data Source: NHS Leeds												DP: Various - Listed with each report									
Birth Data						3 year rolling average of births below 2.5kg						Number and rate of conceptions per 1000 15-17 year olds									
DP: C						% low birth weight babies						DP: O									
			2006-08			2007-09			2008-10			June to May			2008-09			2009-10			
Cluster				8.4				7.0				6.5	Cluster	109		98		88		80	
Wedge				7.1				7.1				6.8	Wedge	380		355		41		40	
Leeds all				7.8				7.8				7.6	Leeds all	1220		1145		45		43	
DP: C	% of women receiving a health and social care needs assessment at 12 weeks as a percentage of live births in the same year						DP: F														
			2009			2010			2011			% Initiating breastfeeding April to March			% breastfeeding at 6 weeks April to March						
Cluster				84.6				87.4				84.6	57.1		56.0		29.4		28.5		
Wedge				83.7				85.7				85.3	69.6		68.0		42.2		40.1		
Leeds all				81.6				82.9				84.0	67.6		65.1		40.4		39.3		
DP: C	Number of emergency admissions by age group 2007-11						Number of emergency admissions to hospital for injury, poisoning and certain other consequences of external causes by age group														
			0-4		5-10		11-18					0-4		5-10		11-18					
Cluster	1662		412		925					224		141		358							
Wedge	9185		2518		6030					1108		809		2250							
Leeds all	29793		8247		18194					3419		2522		6711							
Immunisation Data	% of 2 year olds receiving vaccinations in quarter 3 for:						% of 5 year olds receiving vaccinations in quarter 3 for:														
DP: F	Diphtheria			MMR			Diphtheria			MMR											
Cluster	96	96	97	91	92	93	95	94	96	96	95	95									
Wedge	97	97	98	88	90	95	95	93	96	93	90	94									
Leeds all	96	96	97	86	88	94	95	94	96	91	91	95									

Data Source: National Child Measurement Programme												DP: A					
Obesity in Reception						Obesity in Year 6											
% Obese			% Obese or overweight			% Obese			% Obese or overweight								
08-09	09-10	10-11	08-09	09-10	10-11	08-09	09-10	10-11	08-09	09-10	10-11						
Cluster	12.8	14.9	13.5	27.1	31.0	28.4	20.7	21.0	20.9	34.7	32.9	32.9					
Wedge	9.6	10.0	9.4	23.0	24.4	23.1	20.6	20.2	18.7	34.2	33.9	32.7					
Leeds all	9.4	10.2	9.7	21.7	23.7	23.4	20.3	20.7	20.0	34.3	35.1	34.3					
Obesity	Obesity in Reception						Obesity in Year 6										
			3 year average 2008-2011			3 year average 2008-2011						3 year average 2008-2011					
			% Obese			% Obese or overweight						% Obese			% Obese or overweight		
Cluster	13.71			28.79			20.84			33.74							
Wedge	9.66			23.49			19.88			33.66							
Leeds all	9.77			22.96			20.32			34.56							

Stay Safe

Data Source: Children's Services					DP: Various - Listed with each report									
Number of LAC and Child protection plans	The number of children and young people looked after by the Local Authority - March based on home address before coming into care						The number of children with child protection plans - March			DP: S				
	DP: S		2011	2012	based on placement address		2012	2011	2012					
	Cluster		113	120		76		114	126					
Wedge		0	411		326		0	379						
Leeds all		1439	1454		1454		947	1019						
Number of Common Assessments (CAFs)					Social Care			Social Care Referrals		Requests for Service				
DP: C	2008	2009	2010	2011	DP:A	2009	2010	2011	DP:S	Feb 11 - Jan 12				
Cluster	48	52	64	48	Cluster	997	925	881		2011				
Wedge	140	243	312	278	Wedge	3813	3622	3852		8460				
Leeds all	457	849	1115	892	Leeds all	14248	13784	14000		30539				
Number of Child and Adolescent Mental Health Services referrals														
DP: S	aged 11 and under				aged 12-18				total referrals					
September-October	2009-10		2010-11		2009-10		2010-11		2009-10		2010-11			
Cluster			101		61		258		118		359		179	
Wedge			512		362		1054		588		1566		950	
Leeds all			1767		1124		2976		1730		4743		2854	

Make a positive Contribution

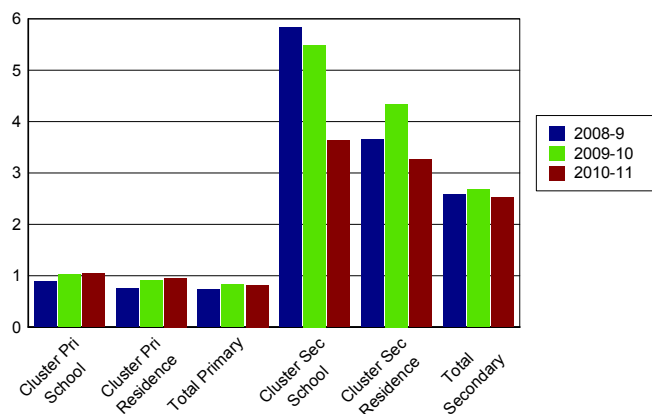
Data Source: West Yorkshire Police										DP: C
Property Crime Number of recorded crimes for:	Burglary dwelling		Burglary elsewhere		Criminal damage		Robbery		Vehicle crime	
	10	11	10	11	10	11	10	11	10	11
	Cluster	550	682	360	286	749	610	31	25	427
Wedge	4156	4057	2127	2015	4299	3249	379	413	2945	2637
Leeds all	9508	8487	5681	5408	13599	10426	1297	1226	9168	7971
Personal Crime Number of recorded crimes for:					Drug Offences		Theft from person		Violent crime	
					10	11	10	11	10	11
	Cluster					15	128	16	34	493
Wedge					187	934	290	525	2966	2712
Leeds all					1248	3192	2235	3034	11233	10896
Domestic Violence Incidents	Number of incidents recorded with a domestic qualifier or disposition code on the Storm WYP incident recording system - 2011									
Cluster	830									
Wedge	3695									
Leeds all	14525									

Data Source: Youth Offending Service										DP: A		
Youth Offending	Number of Offenders					Number of Offences						
	07-08	08-09	09-10	10-11	07-08	08-09	09-10	10-11	07-08	08-09	09-10	10-11
Cluster	136	105	70	69	369	219	117	156				
Wedge	627	474	334	355	1616	1031	732	785				
Leeds all	2741	2166	1522	1511	6331	4883	3134	3150				
April 2010 - March 2011 Number of offences by young offenders												
	Burglary	Breaches	Criminal Damage	Drugs Offences	Motoring and Vehicle	Other	Public Order	Theft and handling	Violence against the person			
Cluster	20	11	17	7	9	12	10	51	19			
Wedge	96	68	86	50	62	67	58	171	127			
Leeds all	291	270	328	204	218	358	282	612	587			

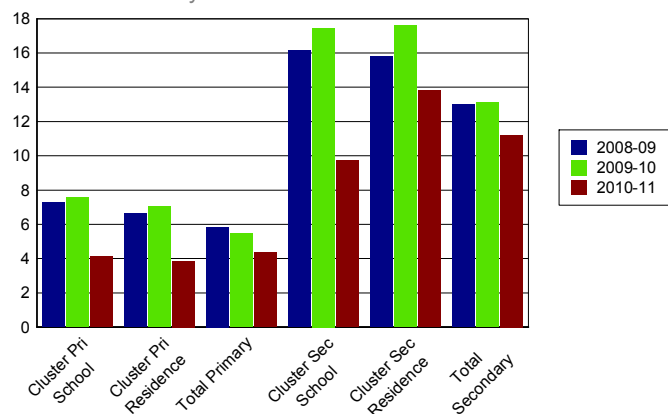
Data Source: School Census													DP: A
Attendance and persistent absence by percentage	Attendance			Authorised Absence			Unauthorised Absence			Persistent Absence 15%			
	08-09	09-10	10-11	08-09	09-10	10-11	08-09	09-10	10-11	08-09	09-10	10-11	
Primary													
Cluster school	94	94	95	5	5	4	0.9	1.0	1.0	7.3	7.6	4.1	
Cluster residence	94	94	95	5	5	4	0.8	0.9	1.0	6.6	7.0	3.8	
Total primary	94	94	95	5	5	4	0.7	0.8	0.8	5.9	5.5	4.3	
Secondary													
Cluster school	89	90	92	5	5	4	5.8	5.5	3.6	16.1	17.5	9.7	
Cluster residence	90	90	92	6	6	5	3.7	4.3	3.3	15.8	17.6	13.8	
Total secondary	92	92	92	6	6	5	2.6	2.7	2.5	13.0	13.1	11.2	

% Unauthorised Absence

2008-2011

**% Persistent Absence**

by 15% measure 2008-2011



Data Source: Children's Services													DP: A
Exclusions	Fixed Term Exclusions						Permanent Exclusions						
	Number			Rate per thousand			Number			Rate per thousand			
Primary	08-09	09-10	10-11	08-09	09-10	10-11	08-09	09-10	10-11	08-09	09-10	10-11	
Cluster school	8	11	8	3.2	4.4	3.2	0	0	0	0.0	0.0	0.0	
Cluster residence	20	9	16	6.1	2.8	5.0	0	0	0	0.0	0.0	0.0	
Total primary	467	371	455	7.7	6.0	7.3	2	2	2	0.0	0.0	0.0	
Secondary													
Cluster school	76	78	46	78.9	87.1	49.6	4	3	2	4.2	3.3	2.2	
Cluster residence	255	282	242	134.4	147.0	130.3	3	3	3	1.6	1.6	1.6	
Total secondary	4350	4286	3806	93.6	93.1	83.2	52	57	44	1.1	1.2	1.0	

Enjoy and Achieve

Data Source: Keypas and DFE performance tables

DP: A

Foundation Stage Profile Data The percentage of pupils achieving a good level of development (78+ points overall and 6+ points in all PSE and CCL strands)

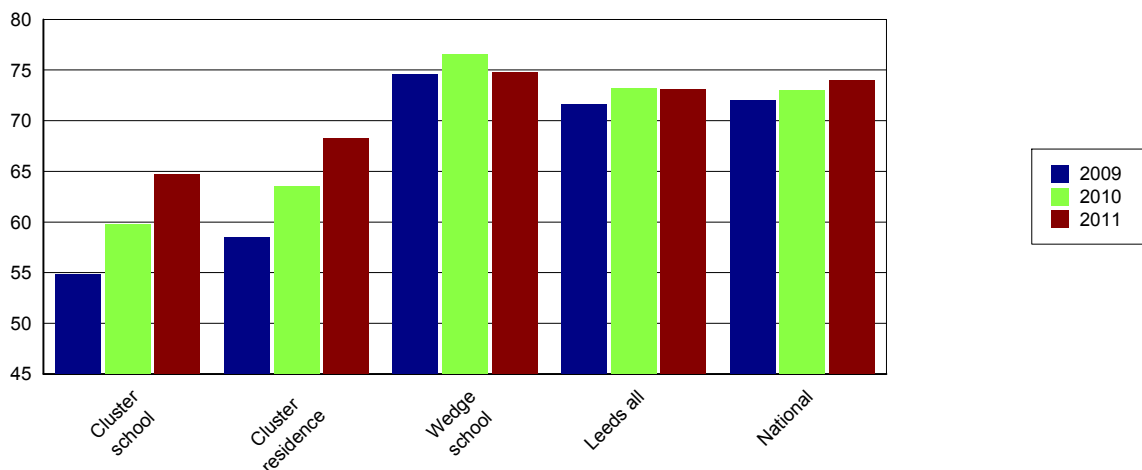
	2008	2009	2010	2011
Cluster school	43	44	45	48
Cluster residence	43	45	44	50
Leeds all	47	51	53	58

KS2 Data DP: A	English 4+			English 5+			Maths 4+			Maths 5+			English & Maths 4+		
	09	10	11	09	10	11	09	10	11	09	10	11	09	10	11
Cluster school	65	70	76	16	19	13	66	69	73	18	20	17	55	60	65
Cluster residence	67	73	77	20	22	17	68	71	75	19	24	22	58	63	68
Wedge school	83	82	83	32	34	30	80	82	80	33	33	35	75	77	75
Leeds all	79	79	81	28	31	32	77	79	78	33	31	32	72	73	73
National	80	80	82	29	33	29	79	79	80	35	34	35	72	73	74

KS2 Data - Expected progress	Made 2 levels of progress in English		Made 2 levels of progress in Maths	
	Number of pupils	Percentage	Number of pupils	Percentage
Cluster school	253	89.1	227	79.9
Wedge school	2174	88.1	2092	84.7
Leeds all	6334	88.6	6087	85.0
National		84.0		83.0

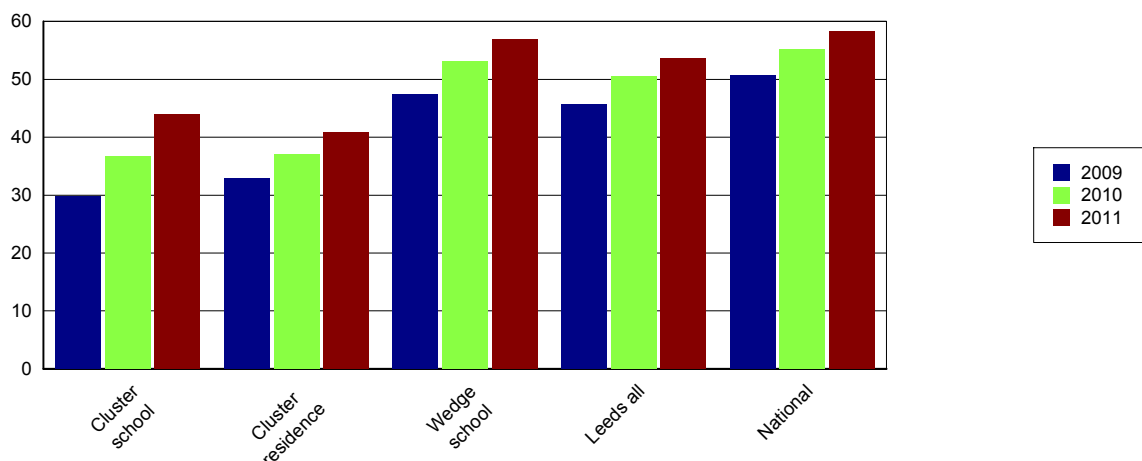
Percentage of English and Maths

Level 4+



Data Source: EPAS and DFE performance tables												DP: A	
The results are for GCSE & equivalent qualifications. The calculation of achieving no qualifications includes all qualifications													
KS4 Data	% of 5+ A*-C			% of 5+ A*-C inc Eng & Maths			% English Baccalaureate	% of 5+ A*-G			% achieving no qualifications		
	09	10	11	09	10	11		11	09	10	11	09	10
Cluster school	52	68	81	30	37	44	2	83	93	96	3	1	1
Cluster residence	53	69	73	33	37	41	6	86	91	91	5	2	2
Wedge school	68	75	81	47	53	57	19	92	94	96	1	1	1
Leeds all	67	76	82	46	51	54	13	91	94	94	2	2	1
National	70	76	81	51	55	58	15	94	95	95		1	1

Percentage 5 A*-C Including English and Maths



Achieve Economic Well Being

Key: Not in Employment, Education or Training (NEET), In Employment, Education or Training (EET), in Full time Education (FE)													
Data Source: November destination survey													DP: S
NEET/FE		Number of NEET			% NEET			Number of FE			% FE		
		2009	2010	2011	2009	2010	2011	2009	2010	2011	2009	2010	2011
Cluster school	Year 11	23	11	10	11	7	8	145	137	101	70	84	76
	Year 12	SUPP	SUPP	5	SUPP	SUPP	6	54	48	76	81	75	88
	Year 13	SUPP	SUPP	SUPP	SUPP	SUPP	SUPP	27	32	34	54	65	72
Cluster residence	Year 11	49	28	25	12	7	7	285	331	308	71	84	81
	Year 12	6	6	6	5	4	4	100	130	125	78	86	91
	Year 13	6	6	8	6	6	7	69	61	91	68	63	82
Leeds all	Year 11	646	393	357	8	5	5	6703	7194	6564	80	87	87
	Year 12	132	67	115	3	2	3	3436	3476	3550	90	93	93
	Year 13	121	135	120	5	4	4	2067	2350	2593	78	76	84

Data Source: Integrated Youth Support Service										DP: O
16-18 NEET and EET Nov 2011 to Jan 2012	NEET		EET		Not Known		Other Activity			
	Number	%	Number	%	Number	%	Number	%		
Cluster	109	10.3	930	88.2	SUPP	SUPP	SUPP	SUPP		
Wedge	452	6.1	6860	93.0	104	1.4	21	0.3		
Leeds all	1538	7.0	20170	91.7	343	1.6	58	0.3		

Please Note: Leeds totals for 16-18 NEET will not match publicised totals as published totals include a proportion of those whose status has expired